

THIS FACILITY PRODUCES

CHEESE

INGREDIENTS



# Jerome

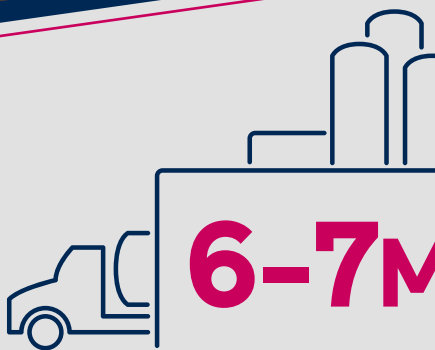
Idaho

Facility square footage

**850,000**

Number of employees

**400**

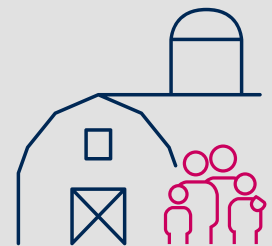


**6-7M**

**lbs. of milk  
received  
DAILY**

Where does the milk come from?

**20-30**  
local producers



**Idaho ranks**

**#3**

in the US for milk and cheese production. Southern Idaho ranks #1 in cheese production for the state.

<https://southernidahodevelopment.com/target-industry/agricultural-products/>

What is the milk used to make?



muenster • mozzarella • provolone •  
monterey jack • cheddar



alpha-lactalbumin • cream •  
WPI (whey protein isolate) • permeate •  
sweet whey • GMP (glycomacropeptide)  
PDPW (premium deproteinized whey) •  
NFDM (non-fat dry milk)